

Trees and Tree Diseases

The map on the right is showing data for different tree species and data for the projected death of forests due to various tree diseases and pathogens.

Forests and Tree Species

The Dark Blue data on the map represents mostly Oak forests and some other closely related tree species.
The Orange on the map mostly shows various species of Pine trees and other closely related species.
The Turquoise colored data shows Birch, some Maple, and other very closely related species.

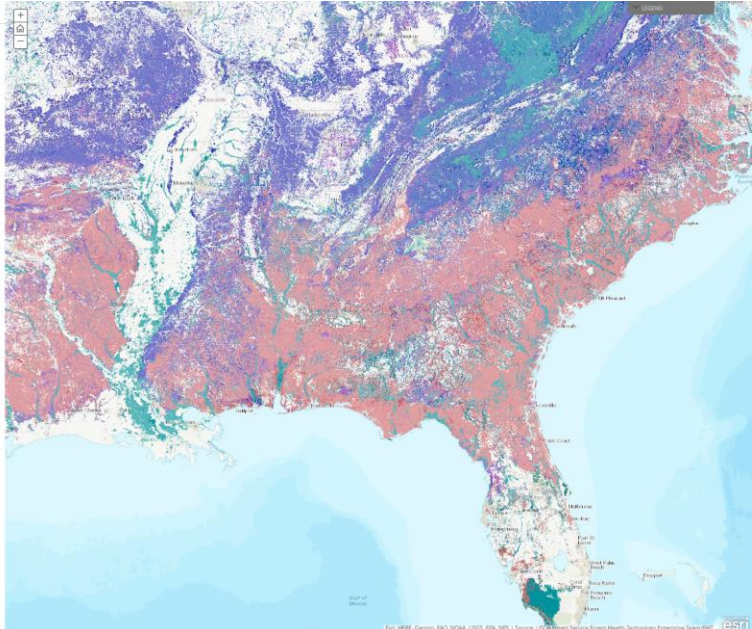
The Death of Forests

The Southeastern United States is the big focus as it has a disproportionately high proportion for dying forests, why was that? Well in the States, as those areas have a projected forest loss of up to 75%.

Diseases

The main disease responsible for the death of the Oak forests is likely Oak Wilt. This is an Oak tree specific disease and is a fungal infection spread by insects. Oaks affected by this disease typically die within six months.

Pine trees today are being hit by many different diseases, including Pine Wilt, Diplomatic Needlecast, and Lophodermium Needlecast. All of these diseases are fungal and result in a quick death for the trees, usually during the fall after the spring in which the trees were infected.



Trees and Tree Diseases

The map on the right is showing data for different tree species and data for the projected death of forests due to various tree diseases and pathogens.

Forests and Tree Species

The Dark Blue data on the map represents mostly Oak forests and some other closely related tree species.
The Orange on the map mostly shows various species of Pine trees and other closely related species.
The Turquoise colored data shows Birch, some Maple, and other very closely related species.

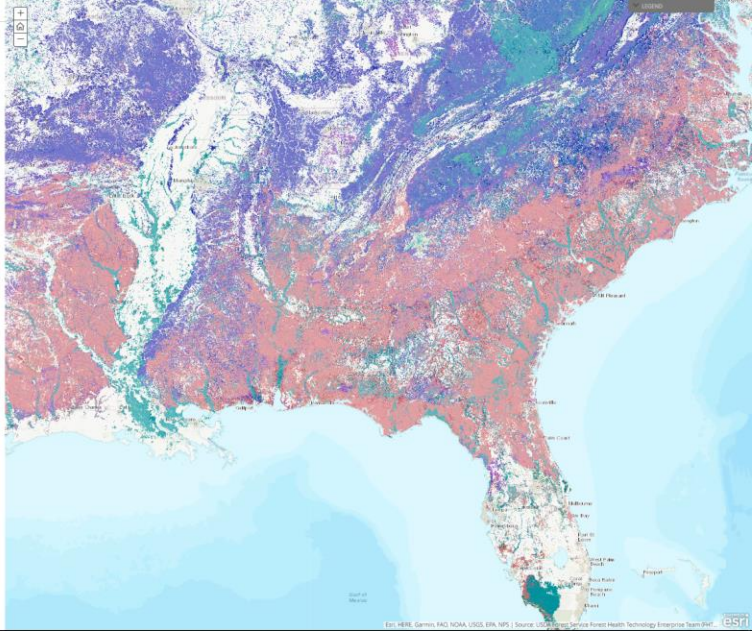
The Death of Forests

The Southeastern United States is the big focus as it has a disproportionately high proportion for dying forests, why was that? Well in the States, as those areas have a projected forest loss of up to 75%.

Diseases

The main disease responsible for the death of the Oak forests is likely Oak Wilt. This is an Oak tree specific disease and is a fungal infection spread by insects. Oaks affected by this disease typically die within six months.

Pine trees today are being hit by many different diseases, including Pine Wilt, Diplomatic Needlecast, and Lophodermium Needlecast. All of these diseases are fungal and result in a quick death for the trees, usually during the fall after the spring in which the trees were infected.



Trees and Tree Diseases

The map on the right is showing data for different tree species and data for the projected death of forests due to various tree diseases and pathogens.

Forests and Tree Species

The Dark Blue data on the map represents mostly Oak Forests and some other closely related tree species.
The orange on the map mostly shows various species of Pine trees and other closely related species.
The Purple colored data shows Birch, some Maple, and other very closely related species.

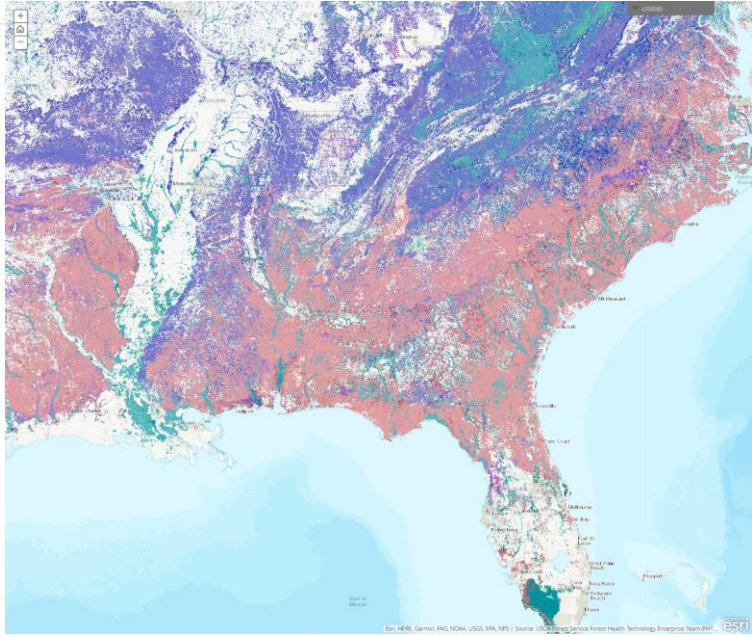
The Death of Forests

The Southeastern United States is the big focus as it has a disproportionately high projection for dying forests. Any area tinted White is the focus - as those areas have a projected forest loss of up to 70%.

Diseases

The main disease responsible for the death of the Oak forest is likely Oak Wilt. This is an Oak tree specific disease and is a fungal infection spread by insects. Oaks affected by this disease typically die within six months.

Pine trees likely are dying to many different diseases, including Pine Wilt, Dothistroma needlecast, and Lophodermium needlecast. All of these diseases are fungal and result in a quick death for the trees, usually during the Fall after the spring in which the trees were infected.



Trees and Tree Diseases

The map on the right is showing data for different tree species and data for the projected death of forests due to various tree diseases and pathogens.

Forests and Tree Species

The Dark Blue data on the map represents mostly Oak Forests and some other closely related tree species.
The orange on the map mostly shows various species of Pine trees and other closely related species.
The Purple colored data shows Birch, some Maple, and other very closely related species.

The Death of Forests

The Southeastern United States is the big focus as it has a disproportionately high projection for dying forests. Any area tinted White is the focus - as those areas have a projected forest loss of up to 70%.

Diseases

The main disease responsible for the death of the Oak forests is likely Oak Wilt. This is an Oak tree specific disease and is a fungal infection spread by insects. Oaks affected by this disease typically die within six months.

Pine trees likely are dying to many different diseases, including Pine Wilt, Dothistroma needlecast, and Lophodermium needlecast. All of these diseases are fungal and result in a quick death for the trees, usually during the Fall after the spring in which the trees were infected.

