

A Story Map



Hurricane Evacuation Routes

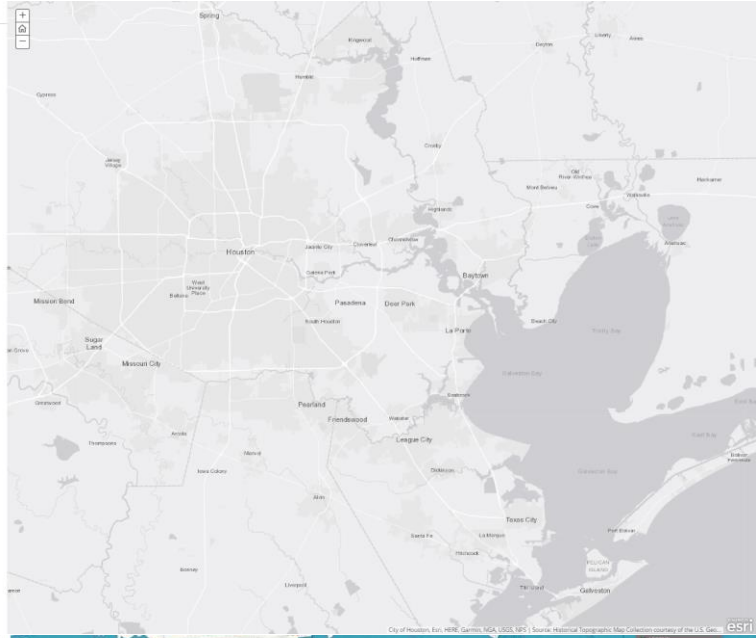
evacuation routes in Houston.

lowest income households in Houston

shown by the pink sections on the map are the lowest income households in Houston. The green shows areas where the evacuation routes intersect the low income households. This helps showing where someone would possibly build a safe place/underground shelter for those who need shelter from hurricane occurrences.

hurricane harvey

caused major damage in Texas, affecting \$122 billion in damage, primarily from large rainfall triggered flooding in the Houston metropolitan area across evacuation routes. Hurricane evacuation routes are important in terms of survival from hurricanes, therefore people need shelter from them, mainly people who live in low income households.



City of Houston, Esri, HERE, Garmin, NGA, IGN, NPS | Source: Historical Topographic Map Collection courtesy of the U.S. Ge...

A Story Map



Hurricane Evacuation Routes

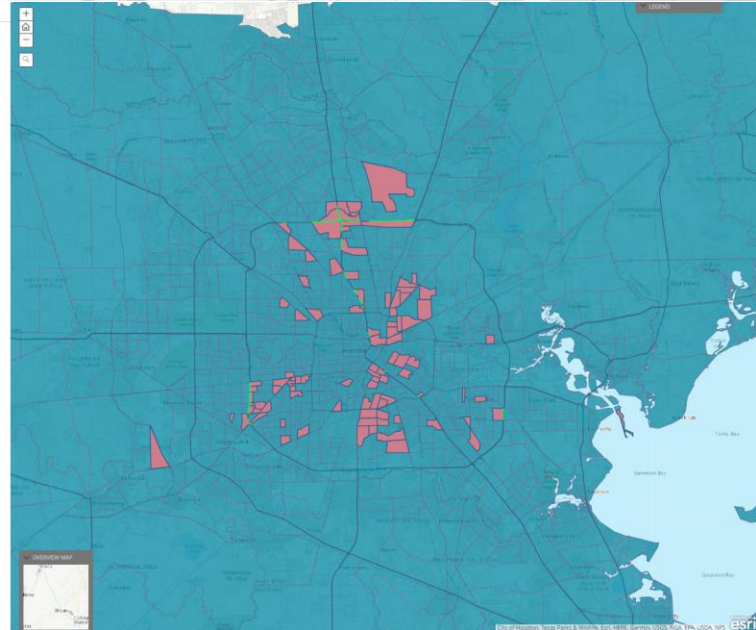
evacuation routes in Houston.

lowest income households in Houston

shown by the pink sections on the map are the lowest income households in Houston. The green shows areas where the evacuation routes intersect the low income households. This helps showing where someone would possibly build a safe place/underground shelter for those who need shelter from hurricane occurrences.

hurricane harvey

caused major damage in Texas, affecting \$122 billion in damage, primarily from large rainfall triggered flooding in the Houston metropolitan area across evacuation routes. Hurricane evacuation routes are important in terms of survival from hurricanes, therefore people need shelter from them, mainly people who live in low income households.



City of Houston, Esri, HERE, Garmin, NGA, IGN, NPS | Source: Historical Topographic Map Collection courtesy of the U.S. Ge...

A Story Map esri

Hurricane Evacuation Routes

← evacuation routes in Houston

lowest income households in Houston

shown by the pink sections on the map are the lowest income households in Houston, the green shows areas where the evacuation routes crossed the low income households, this helps showing where someone would possibly build a safe place to take shelter for those who need shelter from hurricane evacuees.

hurricane harvey

costliest tropical cyclone on record, inflicting \$125 billion in damage, primarily from tragic rainfall-triggered flooding in the Houston metropolitan area coastal evacuation routes? Hurricane evacuation routes are important in means of survival from hurricanes, therefore people need shelter from them, (mainly people who live in low income households)

