
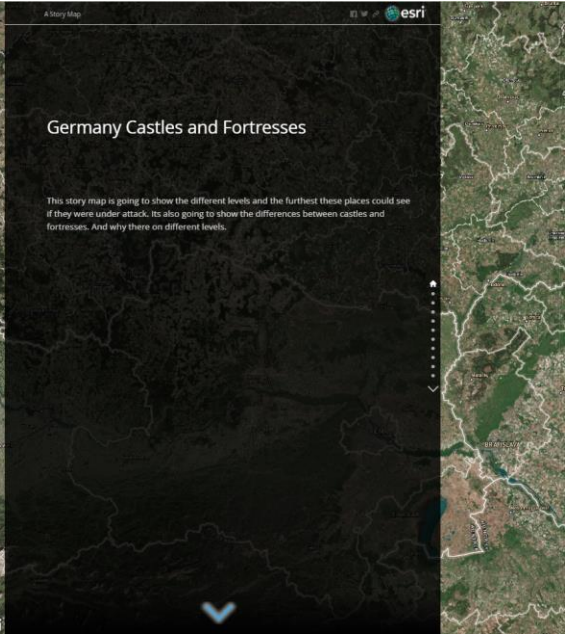



A Story Map 

Germany Castles and Fortresses

This story map is going to show the different levels and the furthest these places could see if they were under attack. Its also going to show the differences between castles and fortresses. And why there on different levels.

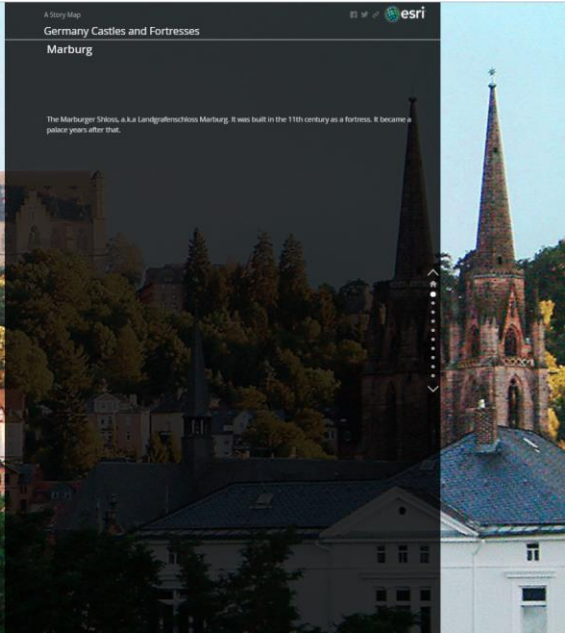


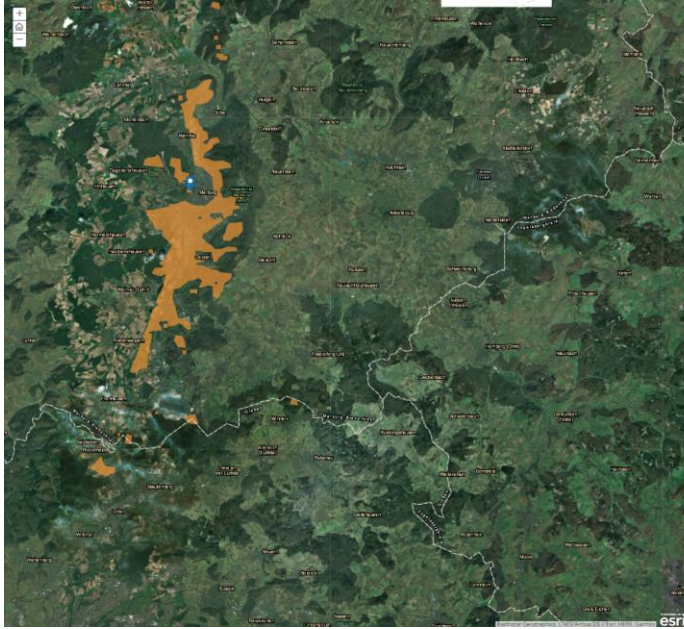
A Story Map 

Germany Castles and Fortresses

Marburg

The Marburger Schloss, a.k.a Landgrafenschloss Marburg. It was built in the 11th century as a fortress. It became a palace years after that.





A Story Map

Germany Castles and Fortresses

Marburg

This castle is now used as many different things now. The 13th-century Gothic-style St. Elizabeth Church holds a shrine with the saint's remains. This Palace can rise up to 31.5 miles. This is on higher ground so it would not be easier to attack.

esri



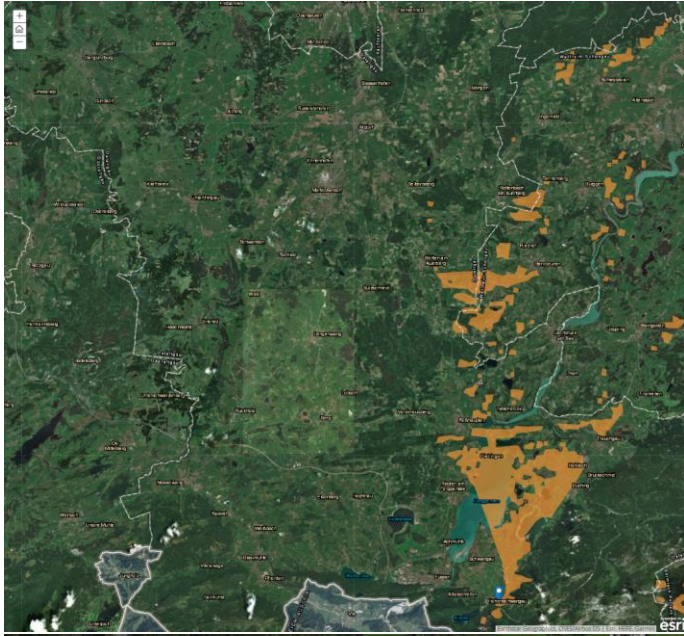
A Story Map

Germany Castles and Fortresses

Neuschwanstein

This was built in 1869 but the construction was never finished. There are only 14 rooms that are finished in here. This is a Romantic Revival. That means that this is a palace but its built like a fortress that gives that romantic theme.

esri



A Story Map
Germany Castles and Fortresses

Linderhof

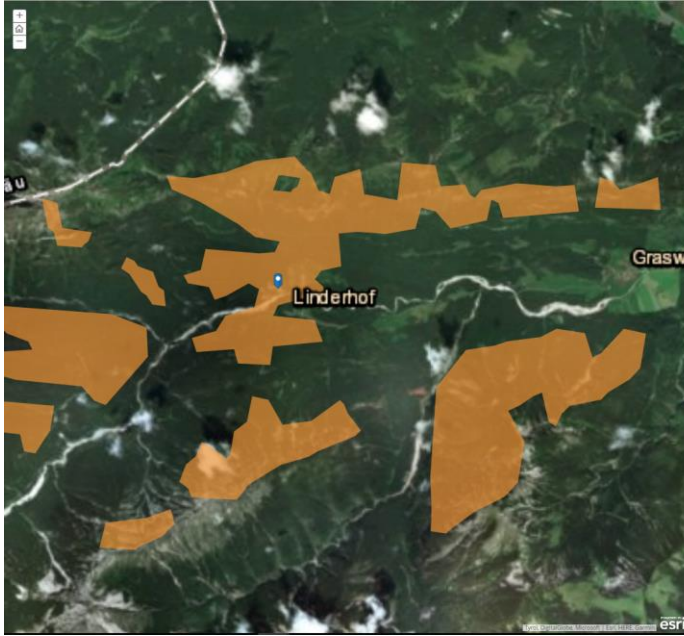
Linderhof is the smallest of the 3 castles that was built by King Ludwig the 2nd. This is the only palace that Ludwig lived to see when it was finished.



A Story Map
Germany Castles and Fortresses

Linderhof

Linderhof is the smallest of the 3 castles that was built by King Ludwig the 2nd. This is the only palace that Ludwig lived to see when it was finished.




A Story Map
Germany Castles and Fortresses
Linderhof

Oberamergau


It was built in 1886. This Palace was the only one Ludwig lived for to see it finished. This can sit up to 11.9 miles which isn't that far compared to all the other ones. This is on lower ground so it would be destroyed easily.

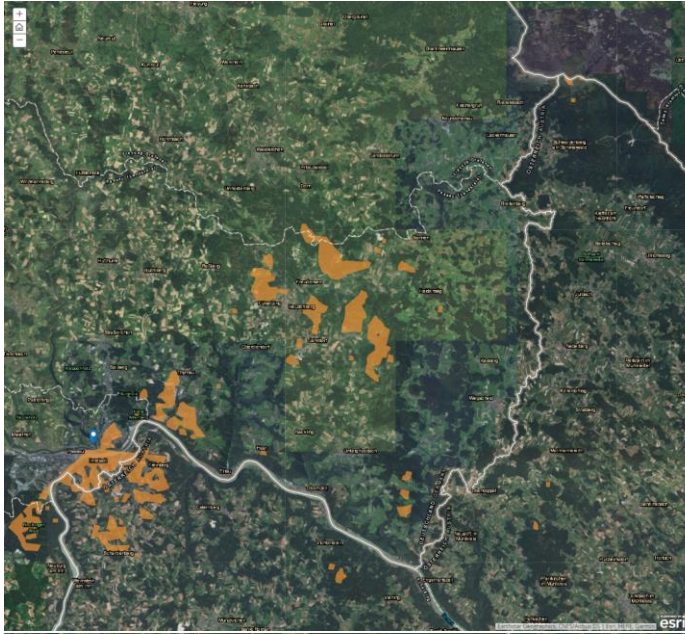
Rahm
Ettal
Farchant
Oberamergau



A Story Map
Germany Castles and Fortresses
Veste Oberhaus

Oberhaus is a fortress that was built in the 13th century. This fortress was attacked 5 times between 1250 and 1482. It was used from about 1219 to 1803. In the 19th century this was one of the strongholds against Austrians, it was built by Ulrich the 2nd.

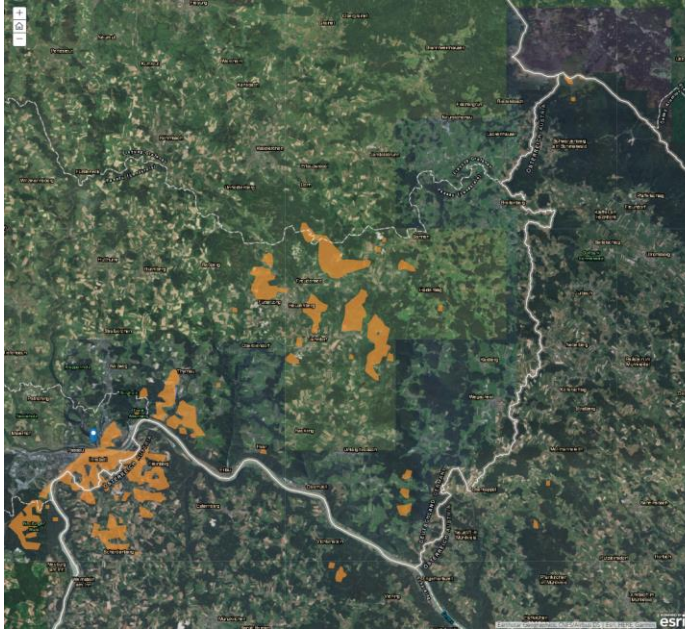




A Story Map
Germany Castles and Fortresses

Result

This project show that these palaces and fortresses can see from different levels. From my research the palaces can see farther. Neuschwanstein is a different palace it was built to look like a fortress built like there original plans.



A Story Map
Germany Castles and Fortresses

Result

This project show that these palaces and fortresses can see from different levels. From my research the palaces can see farther. Neuschwanstein is a different palace it was built to look like a fortress built like there original plans.

