

Cancer Rates in Relation to Radioactive Waste

By Alex Antonacci

Introduction

Radioactive waste has been found all over Western New York for the past 30-35 years. The first time it was found was back in 1981. Around 80% of the radioactive waste was from the excess waste from the Manhattan project. Some of the Manhattan project took place here in Western New York. A lot of the other waste has been found all over. Some of that waste is right under school grounds. This waste has been found to raise cancer rates.

Lewiston

In Lewiston the radioactive waste was found on the Lewiston Porter City School District. The school district has schools on top of the contaminated ground. After this was discovered studies were set to take place. Superintendent Dr. Walter Polke requested a study from the "Cancer Surveillance Program of the Bureau of Chronic Disease Epidemiology and Surveillance" and "New York State Department of Health". The studies have taken cancer cases from the years 1981-2000 of the former students of the Lewiston and Porter City School District.

Cancer in Lewiston

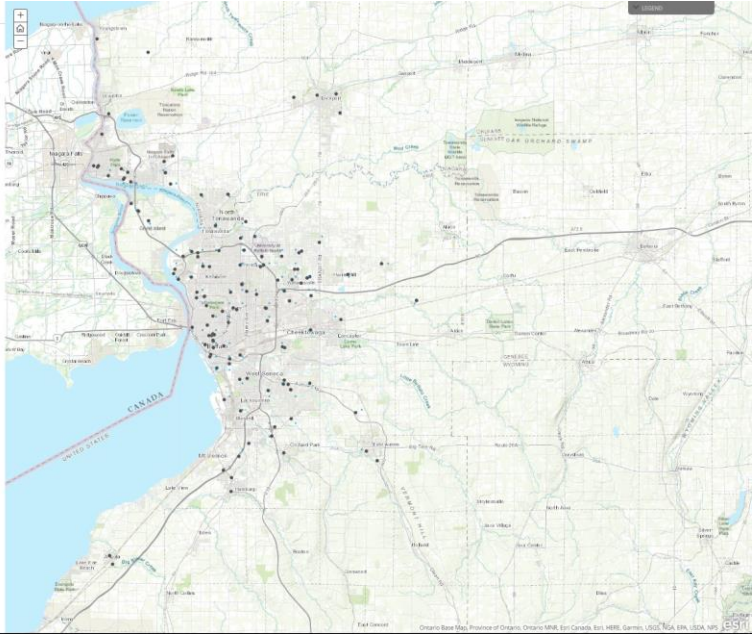
In the study area it directly corresponds to the school district. The study plan was to determine if the number of rising cancer cases seems unusual. To be able to do this they would compare the cancer cases found to the cancer cases expected to find in specific areas in New York including New York City. In Lewiston there was a total of 280 cancer cases (152 males/128 females). The cancer cases for the males were higher (152) than the expected 81-82. For females there was a total of 128 cases which was also higher than the 90 cases expected.

Cancer Cases for Males

All of the Patients were diagnosed under the age of 40 and most related with the patient. For Males The most common types of cancer were prostate 238 cases observed (177 cases expected), colon rectal, with 77 cases observed (73 cases expected) and lung with 77 cases observed (75 cases expected). Fewer than six cases were observed for cancers of the brain/meningeal, the duct, thyroid and for multiple myeloma.

Cancer cases for females

The most common types of cancer observed among females included breast, with 133 cases observed (142 cases expected), cervical, with 77 cases observed (73 cases expected) and lung with 77 cases observed (75 cases expected). Fewer than six cases were observed for cancers of the brain/meningeal, the duct, thyroid and for multiple myeloma.



Cancer Rates in Relation to Radioactive Waste

Introduction

Radioactive waste has been found all over Western New York for the past 30-35 years. The first time it was found was back in 1981. Around 80% of the radioactive waste was from the excess waste from the Manhattan project. Some of the Manhattan project took place here in Western New York. A lot of the other waste has been found all over. Some of that waste is right under school grounds. This waste has been found to raise cancer rates.

Lewiston

In Lewiston the radioactive waste was found on the Lewiston Porter City School District. The school district has schools on top of the contaminated ground. After this was discovered studies were set to take place. Superintendent Dr. Walter Polke requested a study from the "Cancer Surveillance Program of the Bureau of Chronic Disease Epidemiology and Surveillance" and "New York State Department of Health". The studies have taken cancer cases from the years 1981-2000 of the former students of the Lewiston and Porter City School District.

Cancer in Lewiston

In the study area it directly corresponds to the school district. The study plan was to determine if the number of rising cancer cases seems unusual. To be able to do this they would compare the cancer cases found to the cancer cases expected to find in specific areas in New York including New York City. In Lewiston there was a total of 280 cancer cases (152 males/128 females). The cancer cases for the males were higher (152) than the expected 81-82. For females there was a total of 128 cases which was also higher than the 90 cases expected.

Cancer Cases for Males

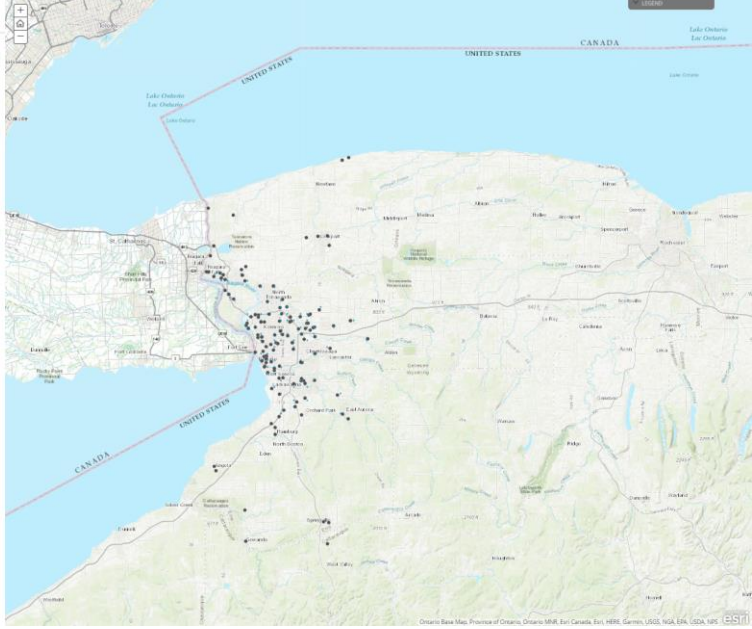
All of the Patients were diagnosed under the age of 40 and most related with the patient. For Males The most common types of cancer were prostate 238 cases observed (177 cases expected), colon rectal, with 77 cases observed (73 cases expected) and lung with 77 cases observed (75 cases expected). Fewer than six cases were observed for cancers of the brain/meningeal, the duct, thyroid and for multiple myeloma.

Cancer cases for females

The most common types of cancer observed among females included breast, with 133 cases observed (142 cases expected), cervical, with 77 cases observed (73 cases expected) and lung with 77 cases observed (75 cases expected). Fewer than six cases were observed for cancers of the brain/meningeal, the duct, thyroid and for multiple myeloma.

Radioactive wastes in Buffalo

Most of the radioactive waste in Buffalo was from the the 1940's after part of the Manhattan Project took place here in Western New York. After the atomic nuclear energy was built and the ground was uranium until 1980 where it was discovered. Some of the Radioactive was not found in an open ground but some of the waste was dumped into the Niagara Falls and some some of this waste energy affected employees there in the area. The Army never sufficiently decontaminated the area and left behind over 20,000 tons of TWT and Radioactive Waste. It was deposited into the ground into research buildings that were not suited for Radioactive waste in the first place.



Cancer Rates in Relation to Radioactive Waste

Introduction

Radioactive waste has been found all over Western New York for the past 20-30 years. The first time it was found was back in 1981. Around 60% of the radioactive waste was from the excess waste from the Manhattan project. Some of the Manhattan project took place here in Western New York. A lot of the other waste has been found all over. Some of that waste is right under school grounds. This waste has been found to cause cancer rates.

Lewiston

In Lewiston the radioactive waste was found on the Lewiston Porter City School District. The school district has schools on top of the contaminated grounds. After this was discovered studies were left to take place. Superintendent Dr. Walter Polka requested a study from the "Cancer Surveillance Program of the Bureau of Chronic Disease Epidemiology and Surveillance" and "New York State Department of Health". The studies have taken cancer cases from the years 1991-2000 of the former students of the Lewiston and Porter City School District.

Cancer In Lewiston

In the study area it directly corresponds to the School district. The study plan was to determine if the number of rising cancer cases seems unusual. To be able to do this they would compare the cancer cases found to the cancer cases expected to find in specific areas in New York (including New York City). In Lewiston there was a total of 1292 cancer cases (762 males/530 females). The cancer cases for the males were higher (152) than the expected (614). For females there was a total of 530 cases which was also higher than the 362 cases expected.

Cancer Cases for Males

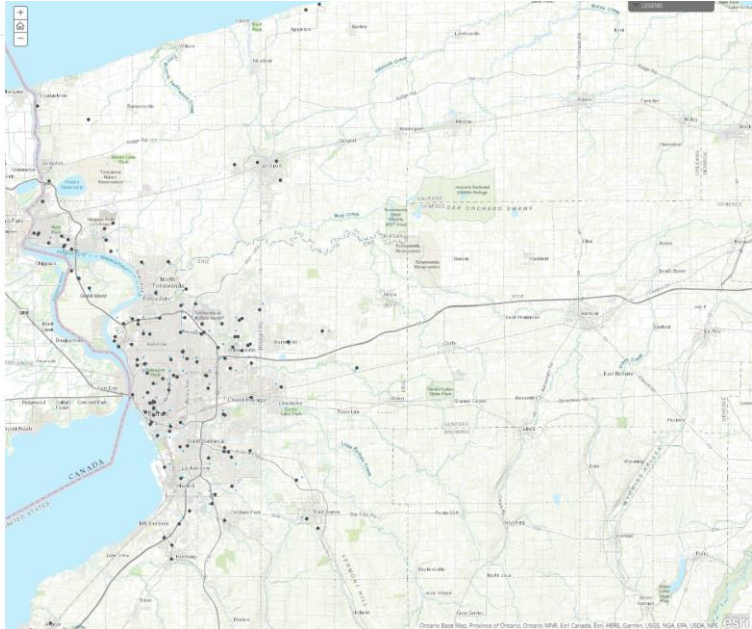
All of the Patients were diagnosed under the age of 40 and into raised with the patient. For Males The most common types of cancer were prostate 238 cases observed (177 cases expected), lung, with 165 cases observed (174 cases expected), and colon/rectal, with 78 cases observed (79 cases expected). Fewer than six cases were observed for cancers of the liver/trahectomy site duct, thyroid and for multiple myeloma.

Cancer cases for females

The most common types of cancer observed among females included breast, with 193 cases observed (162 cases expected), colon/rectal, with 77 cases observed (79 cases expected) and lung with 72 cases observed (78 cases expected). Fewer than six cases were observed for cancers of the esophagus, larynx/trachea/bronchus site duct, and uterine.

Radioactive wastes in Buffalo

Most of the radioactive wastes in Buffalo are from the 1940s after part of the Manhattan Project took place here in Western New York. After the waste nuclear energy was dumped into the ground it was unknown until 1981 where it was discovered. Some of the radioactive waste was found in an access ground site. Some of the waste was dumped into the Niagara Falls Love Canal. None of this waste directly affected anyone's health in the area. The Army never sufficiently decommissioned the area and left behind over 20,000 tons of T-2 and Radioactive Waste. It was deposited into the ground into research buildings that were not suited for Radioactive waste in the first place.



Cancer Rates in Relation to Radioactive Waste

Introduction

Radioactive waste has been found all over Western New York for the past 20-30 years. The first time it was found was back in 1981. Around 60% of the radioactive waste was from the excess waste from the Manhattan project. Some of the Manhattan project took place here in Western New York. A lot of the other waste has been found all over. Some of that waste is right under school grounds. This waste has been found to cause cancer rates.

Lewiston

In Lewiston the radioactive waste was found on the Lewiston Porter City School District. The school district has schools on top of the contaminated grounds. After this was discovered studies were left to take place. Superintendent Dr. Walter Polka requested a study from the "Cancer Surveillance Program of the Bureau of Chronic Disease Epidemiology and Surveillance" and "New York State Department of Health". The studies have taken cancer cases from the years 1991-2000 of the former students of the Lewiston and Porter City School District.

Cancer In Lewiston

In the study area it directly corresponds to the School district. The study plan was to determine if the number of rising cancer cases seems unusual. To be able to do this they would compare the cancer cases found to the cancer cases expected to find in specific areas in New York (including New York City). In Lewiston there was a total of 1292 cancer cases (762 males/530 females). The cancer cases for the males were higher (152) than the expected (614). For females there was a total of 530 cases which was also higher than the 362 cases expected.

Cancer Cases for Males

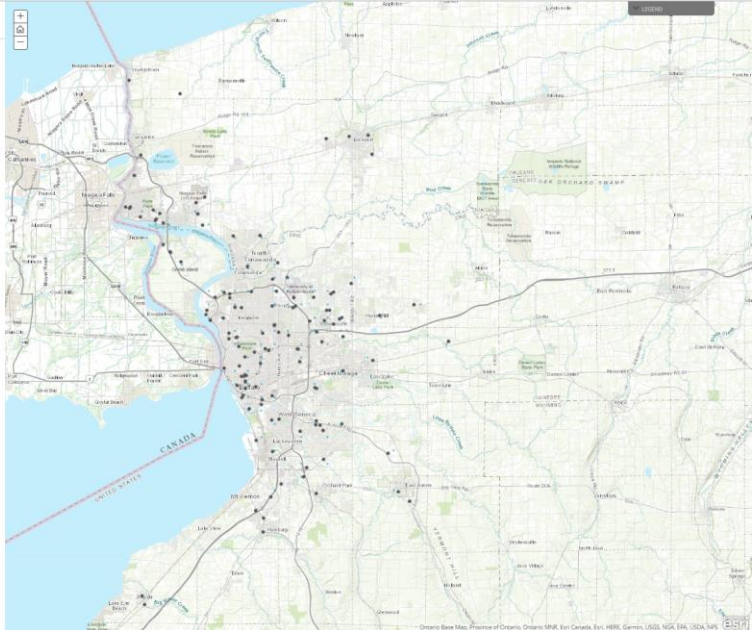
All of the Patients were diagnosed under the age of 40 and into raised with the patient. For Males The most common types of cancer were prostate 238 cases observed (177 cases expected), lung, with 165 cases observed (174 cases expected), and colon/rectal, with 78 cases observed (79 cases expected). Fewer than six cases were observed for cancers of the liver/trahectomy site duct, thyroid and for multiple myeloma.

Cancer cases for females

The most common types of cancer observed among females included breast, with 193 cases observed (162 cases expected), colon/rectal, with 77 cases observed (79 cases expected) and lung with 72 cases observed (78 cases expected). Fewer than six cases were observed for cancers of the esophagus, larynx/trachea/bronchus site duct, and uterine.

Radioactive wastes in Buffalo

Most of the radioactive wastes in Buffalo are from the 1940s after part of the Manhattan Project took place here in Western New York. After the waste nuclear energy was dumped into the ground it was unknown until 1981 where it was discovered. Some of the radioactive waste was found in an access ground site. Some of the waste was dumped into the Niagara Falls Love Canal. None of this waste directly affected anyone's health in the area. The Army never sufficiently decommissioned the area and left behind over 20,000 tons of T-2 and Radioactive Waste. It was deposited into the ground into research buildings that were not suited for Radioactive waste in the first place.



Cancer Rates in Relation to Radioactive Waste

Introduction

Radioactive waste has been found all over Western New York for the past 30-35 years. The first time it was found was back in 1987. Around 80% of the radioactive waste was from the nuclear waste from the Manhattan project. Some of the Manhattan project took place here in Western New York. A lot of the other waste has been found at sites. Some of this waste is right under school grounds. This waste has been found to cause cancer rates.

Lewiston

In Lewiston the radioactive waste was found on the Lewiston Porter City School District. The school District has schools on top of the contaminated ground. After this was discovered studies were set to take place. Superintendent Dr. Walter Poka requested a study from the "Cancer Surveillance Program of the Bureau of Chronic Disease Epidemiology and Surveillance" and "New York State Department of Health". The studies have taken cancer rates from the years 1991-2000 of the former residents of the Lewiston and Porter City School District.

Cancer in Lewiston

In the study area it directly corresponds to the School district. The study plan was to determine if the number of rising cancer cases seems unusual. To be able to do this they would compare the cancer cases found to the cancer cases expected to find in specific areas in New York (including New York City). In Lewiston there was a total of 1260 cancer cases (752 males/508 females). The cancer cases for the males were higher (152) than the expected 814. For females there was a total of 586 cases which was also higher than the 652 cases expected.

Cancer Cases for Males

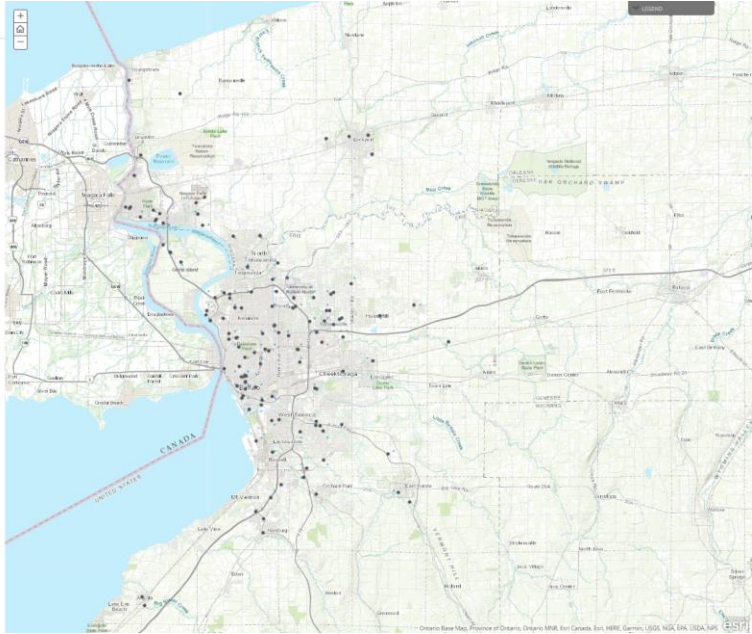
All of the Patients were diagnosed under the age of 40 and interviewed with the patient. For Males the most common types of cancer were prostate 288 cases observed (177 cases expected), lung with 100 cases observed (104 cases expected), and colorectal, with 79 cases observed (76 cases expected). Fewer than six cases were observed for cancers of the larynx/oropharyngeal bile duct, thyroid and for multiple myeloma.

Cancer cases for females

The most common types of cancer observed among females included breast, with 193 cases observed (142 cases expected), colorectal, with 77 cases observed (73 cases expected), and lung, with 72 cases observed (73 cases expected). Fewer than six cases were observed for cancers of the esophagus, liver/hepatocellular bile duct, and larynx.

Radioactive wastes in Buffalo

Most of the radioactive wastes in Buffalo are from the 1940's after part of the Manhattan Project took place here in Western New York after the atomic nuclear energy was developed into the ground it was unknown until 1987 when it was discovered. Some of the radioactive was also found in an above ground site. Some of the waste was dumped into the Niagara Falls Lake Canal. Some of this waste directly affected and caused health in the area. The area near sufficiently decomposed the area and left behind over 20,000 tons of TNT and radioactive waste. It was deposited into the ground into makeshift buildings that were not suited for radioactive waste in the first place.



Cancer Rates in Relation to Radioactive Waste

Introduction

Radioactive waste has been found all over Western New York for the past 30-35 years. The first time it was found was back in 1987. Around 80% of the radioactive waste was from the nuclear waste from the Manhattan project. Some of the Manhattan project took place here in Western New York. A lot of the other waste has been found at sites. Some of this waste is right under school grounds. This waste has been found to cause cancer rates.

Lewiston

In Lewiston the radioactive waste was found on the Lewiston Porter City School District. The school District has schools on top of the contaminated ground. After this was discovered studies were set to take place. Superintendent Dr. Walter Poka requested a study from the "Cancer Surveillance Program of the Bureau of Chronic Disease Epidemiology and Surveillance" and "New York State Department of Health". The studies have taken cancer rates from the years 1991-2000 of the former residents of the Lewiston and Porter City School District.

Cancer in Lewiston

In the study area it directly corresponds to the School district. The study plan was to determine if the number of rising cancer cases seems unusual. To be able to do this they would compare the cancer cases found to the cancer cases expected to find in specific areas in New York (including New York City). In Lewiston there was a total of 1260 cancer cases (752 males/508 females). The cancer cases for the males were higher (152) than the expected 814. For females there was a total of 586 cases which was also higher than the 652 cases expected.

Cancer Cases for Males

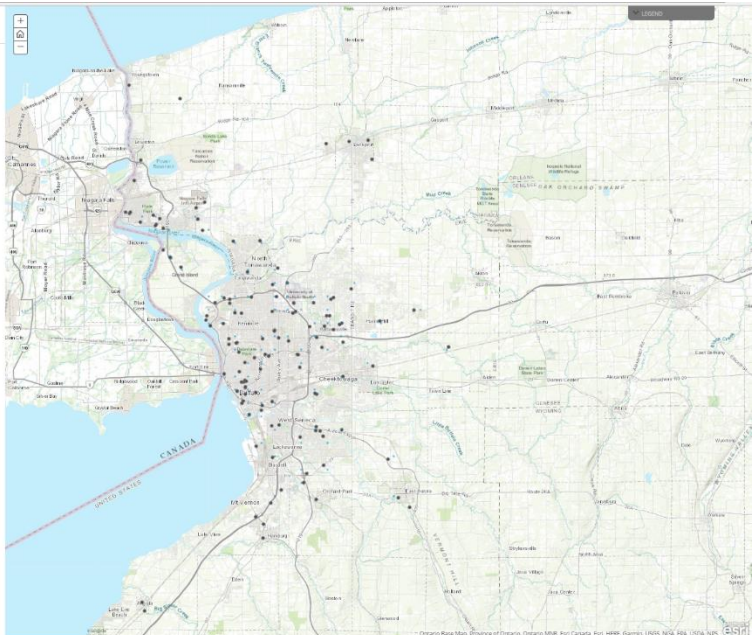
All of the Patients were diagnosed under the age of 40 and interviewed with the patient. For Males the most common types of cancer were prostate 288 cases observed (177 cases expected), lung with 100 cases observed (104 cases expected), and colorectal, with 79 cases observed (76 cases expected). Fewer than six cases were observed for cancers of the larynx/oropharyngeal bile duct, thyroid and for multiple myeloma.

Cancer cases for females

The most common types of cancer observed among females included breast, with 193 cases observed (142 cases expected), colorectal, with 77 cases observed (73 cases expected), and lung, with 72 cases observed (73 cases expected). Fewer than six cases were observed for cancers of the esophagus, liver/hepatocellular bile duct, and larynx.

Radioactive wastes in Buffalo

Most of the radioactive wastes in Buffalo are from the 1940's after part of the Manhattan Project took place here in Western New York after the atomic nuclear energy was developed into the ground it was unknown until 1987 when it was discovered. Some of the radioactive was also found in an above ground site. Some of the waste was dumped into the Niagara Falls Lake Canal. Some of this waste directly affected and caused health in the area. The area near sufficiently decomposed the area and left behind over 20,000 tons of TNT and radioactive waste. It was deposited into the ground into makeshift buildings that were not suited for radioactive waste in the first place.



Introduction

Radioactive waste has been found all over Western New York for the past 30-35 years. The first time it was found was back in 1981. Around 80% of the radioactive waste was from the excess waste from the Manhattan project. Some of the Manhattan project took place near in Western New York. A lot of the other waste has been found all over. Some of that waste is right under school grounds. This waste has been found to raise cancer rates.

Lewiston

In Lewiston the radioactive waste was found on the Lewiston Parish City School District. The school District has schools on top of the contaminated ground. After this was discovered studies were set to take place. Superintendent D. Walter Polka requested a study from the "Cancer Surveillance Program of the Bureau of Chronic Disease Epidemiology and Surveillance" and "New York State Department of Health". The studies have taken cancer cases from the years 1981-2000 of the former students of the Lewiston and Parish City School District.

Cancer in Lewiston

In the study area 4 directly corresponds to the School district. The study plan was to determine if the number of rising cancer cases were unusual. To be able to do this they would compare the cancer cases found to the cancer cases expected to find in specific areas in New York including New York State. In Lewiston there was a total of 1,200 cancer cases 700 males and 500 females. The cancer cases for the males were higher (702) than the expected (614). For females there was a total of 590 cases which was also higher than the 385 cases expected.

Cancer Cases for Males

All of the patients were diagnosed under the age of 40 and interviewed with the patient. For Males the most common types of cancer were prostate (88 cases observed (177 cases expected), colorectal, with 73 cases observed (76 cases expected), liver, with 100 cases observed (104 cases expected), and colon, with 78 cases observed (76 cases expected). Dever than six cases were observed for cancers of the head/neck/throat, bile duct, thyroid, and for multiple myeloma.

Cancer cases for females

The most common types of cancer observed among females included breast, with 153 cases, observed (142 cases expected), colorectal, with 77 cases observed (73 cases expected), and lung, with 22 cases observed (20 cases expected). Dever than six cases were observed for cancers of the esophagus, liver/intestine/gall, bile duct, and thyroid.

Radioactive wastes in Buffalo

Most of the radioactive wastes in Buffalo are from the 1940's after part of the Manhattan Project took place here in Western New York. After the excess nuclear energy was dumped into the ground it was unknown until 1981 when it was discovered. Some of the radioactive waste was found in an above ground silo. None of the waste was dumped into the Niagara Falls Love Canal. None of this waste directly affected employees health in the area. The Army never sufficiently decontaminated the area and left behind over 20,000 tons of TNT and Radioactive Waste. It was deposited into the ground into makeshift buildings that were not suited for radioactive waste in the first place.

